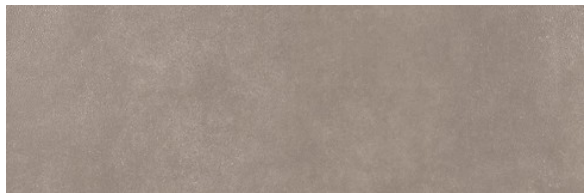


AREGO TOUCH GREY SATIN 29X89

[COLLECTION AREGO TOUCH](#)

PRODUCT CODE:

OP1018-005-1



Product description

Application	Interior
Tile colour	Shadows of grey
Tile design	Cemento
Tile size	29x89
Tile's surface finish	Satin
Tonal tile	Yes
Type of surface	Smooth
Usage	Wall

Technical data

Number of m2 in one packing	1,29
Number of pieces in one packing	5
Packing weight	24,52 kg
Rectified tile	Yes
Shade variation	V1
Stain resistance class	5
Thickness of tile	11 mm
Tile's size	30x90
Warranty	6 years