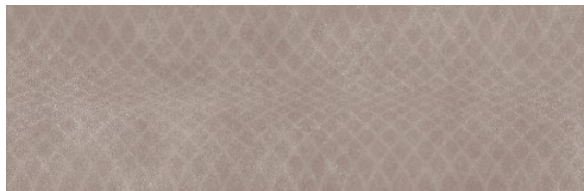


## AREGO TOUCH GREY STRUCTURE SATIN 29X89

### [COLLECTION AREGO TOUCH](#)

PRODUCT CODE:

OP1018-006-1



### Product description

Application	Interior
Tile colour	Shadows of grey
Tile design	Cemento
Tile size	29x89
Tile's surface finish	Satin
Tonal tile	Yes
Type of surface	Structure
Usage	Wall

### Technical data

Number of m2 in one packing	1,29
Number of pieces in one packing	5
Packing weight	23,09 kg
Rectified tile	Yes
Shade variation	V1
Stain resistance class	5
Thickness of tile	11 mm
Tile's size	30x90
Warranty	6 years